



GEARHEADS Frame size 61mm sq. (2.4 in.sq.)

METAL TYPE & BALL BEARING TYPE

▶ **RATED TORQUE OF GEARHEAD**

MODEL	Speed(rpm)		500	300	200	120	100	60	50	30	20	15	10	6	5	3	2	1	
	Ratio	Speed	50Hz	3	5	7.5	12.5	15	25	30	50	75	100	150	250	300	500	750	1500
L6HD□M L6HD□B L6G10D(DECIMAL)	High	kg-cm	60Hz	3.6	6	9	15	18	30	36	60	90	120	180	300	360	600	900	1800
	Low		1.2	1.9	2.9	4.9	5.8	8.8	10.5	15.8	23.8	30	30	30	30	30	30	30	30
	High	N-m	0.11	0.19	0.29	0.48	0.57	0.89	1.03	1.55	2.33	2.94	2.94	2.94	2.94	2.94	2.94	2.94	2.94
	Low		0.10	0.16	0.24	0.40	0.48	0.72	0.86	1.29	1.94	2.59	2.94	2.94	2.94	2.94	2.94	2.94	
	High	oz-in	16	27	40	67	81	122	146	220	330	417	417	417	417	417	417	417	417
	Low		13	22	34	56	67	101	122	183	275	367	417	417	417	417	417	417	

- * The normal torque is that the motor and gearhead are directly coupled.
- * Insert the denominator of reduction ratio in □ of gearhead model name.
- * Actual rotation speed is 2~15% less than synchronous speed.
- * ■Color indicates that the rotation of gearhead shaft is in opposite direction as output shaft of motor.

With Decimal Gearhead

SPEED CONTROL
INDUCTION MOTORS

DIMENSIONS

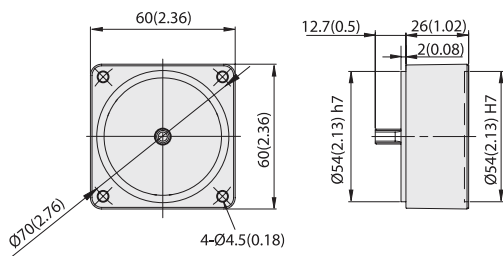
Unit : mm(inch)

DECIMAL GEARHEAD

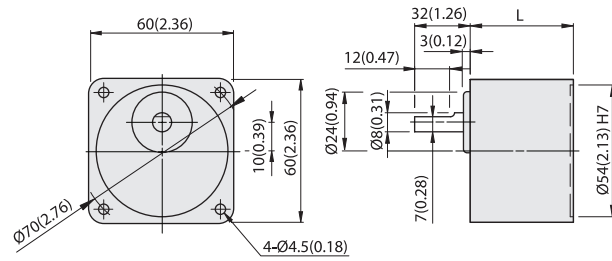
GEARHEAD

L6G10D

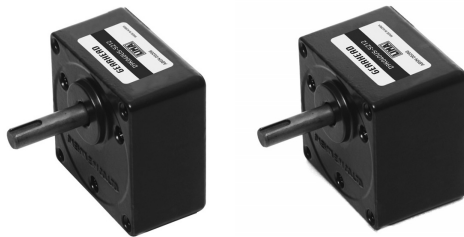
L6HD□M(B)



WEIGHT 0.2kg(0.44 lb)



GEAR RATIO	L		WEIGHT		BOLT
	mm	in	kg	lb	
1/3~1/18	30	1.18	0.3	0.66	M4x50
1/20~1/200	41	1.57	0.4	0.88	M4x60



L6HD□M(B) + L616P□LT

